



## QUAD•DRILL+™

Ingersoll has launched its IN6520 grade insert. This new addition to the Quad•Drill+ family strengthens an already formidable product line.

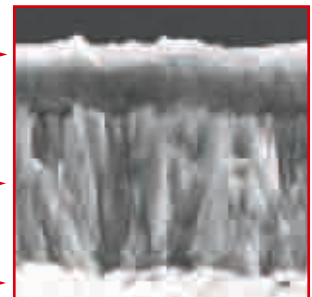
### FEATURES of IN6520:

- Layered coating to provide high wear and chip resistance.
- Toughened substrate durable under variable cutting condition.
- Exceptional performance at high and medium machining ranges.

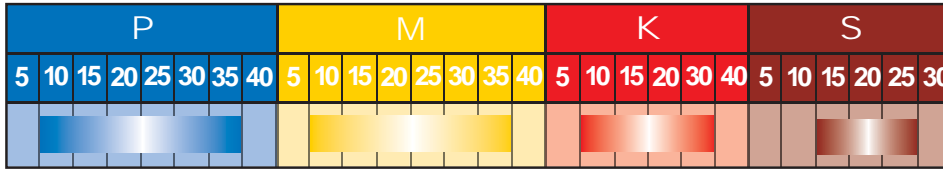
High wear resistant coating

High chip resistant layer

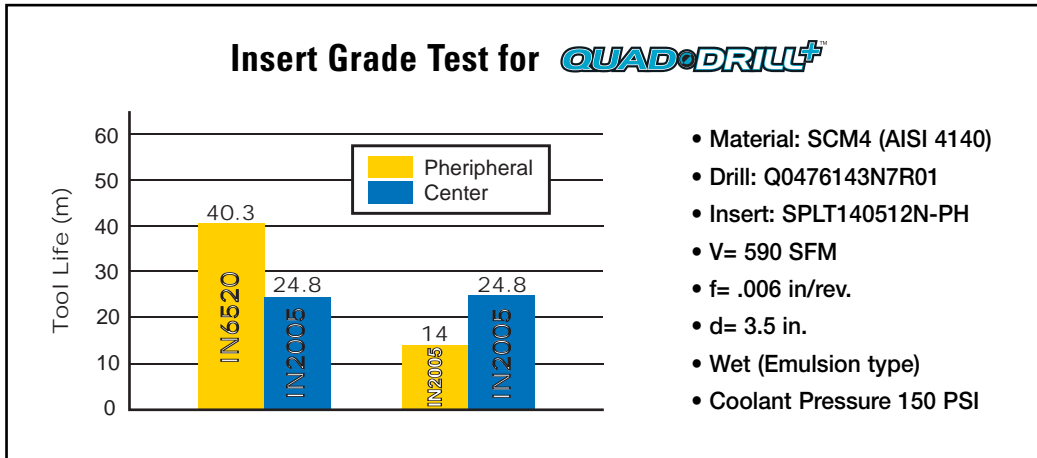
Toughened substrate



**APPLICATION RANGE IN DRILLING:**



**TEST REPORT:**

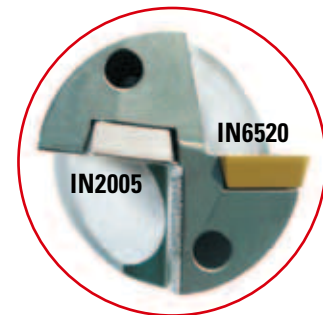


**RECOMMENDED CUTTING SPEED:**

Please apply IN2005 machining conditions in the catalog to IN6520.

**INSERT GRADES IN *QUAD•DRILL<sup>+</sup>* LINES:**

Insert Designation	GRADE		
	IN2005 (Dark Gray)	IN1030 (Dark Gray)	IN6520 (Yellow)
SCLT050204N-PH	•	•	Not Available
SHLT060204N-PH	•	•	(5151064)
SPLT07T308N-PH	•	•	(5140256)
SHLT090408N-PH1	•	•	(5101035)
SHLT110408N-PH1	•	•	(5101036)
SPLT140512N-PH	•	•	(5101037)



- 1) •: Available, ( ): Item Number.
- 2) Use IN6520 grade as peripheral inserts **ONLY**.
- 3) Generally use IN2005 in both pockets for general machining.  
Use IN6520 grade just in peripheral pocket whenever tool life is a major concern in the application.